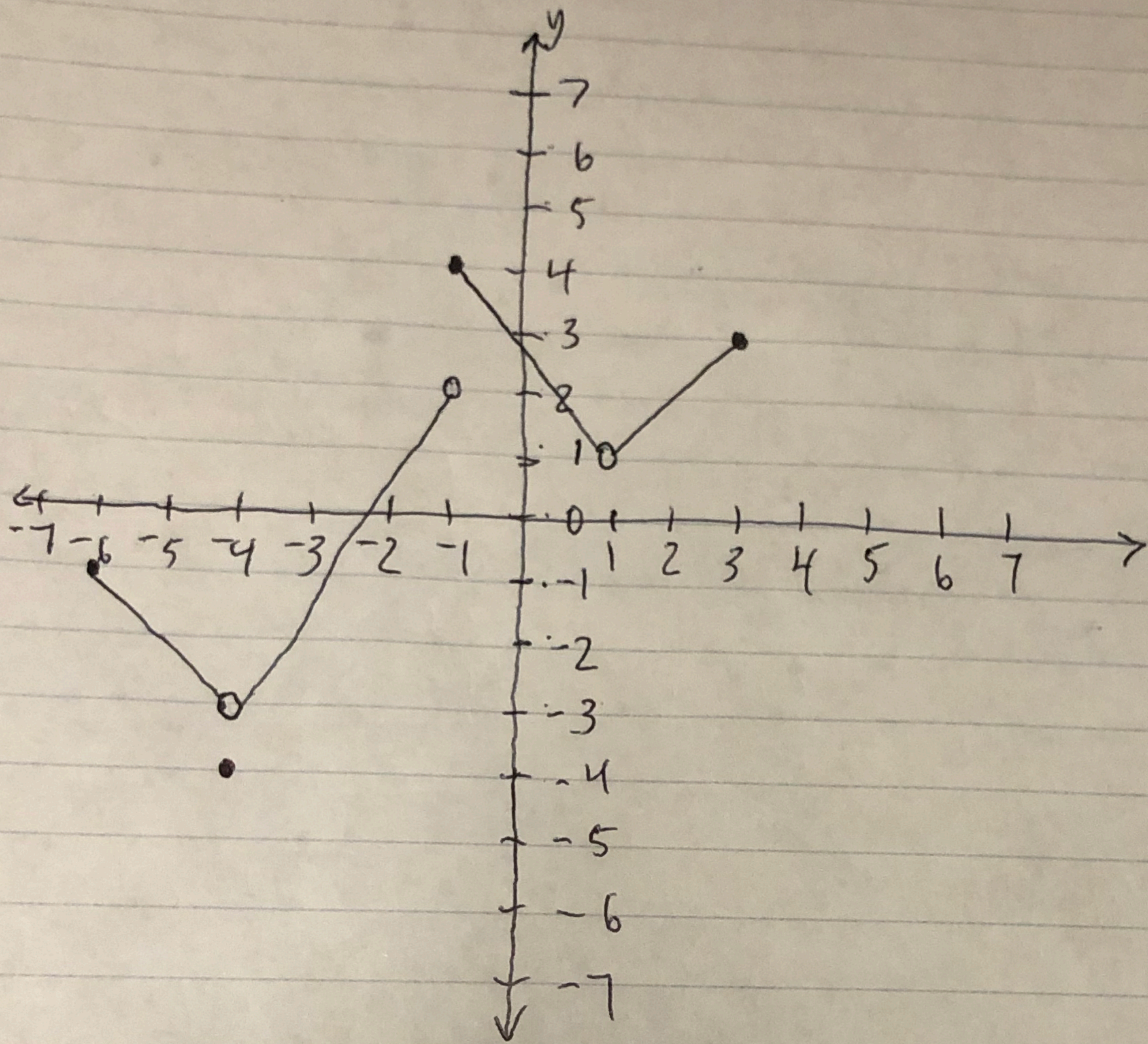


Graphically Evaluate The Limit of a Function : Thomas Parisi



$$1) \lim_{x \rightarrow -4^+} f(x) = -3$$

$$5) \lim_{x \rightarrow -1^-} f(x) = 2$$

$$2) \lim_{x \rightarrow -4^-} f(x) = -3$$

$$6) \lim_{x \rightarrow -1} f(x) = \text{DNE}$$

$$3) \lim_{x \rightarrow -4} f(x) = -3$$

$$7) \text{ ~~f(4)~~ } f(4) = -4$$

$$4) \lim_{x \rightarrow -1^+} f(x) = 4$$

$$8) f(-1) = 4$$